

Coaxial Frequency Mixer

ZMX-10G+

Level 7 (LO Power +7 dBm) 3700 to 10000 MHz

Maximum Ratings

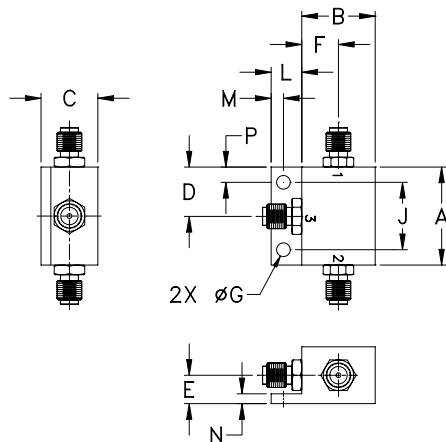
Operating Temperature	-55°C to 100°C
Storage Temperature	-55°C to 100°C
RF Power	50mW
IF Current	40mA

Permanent damage may occur if any of these limits are exceeded.

Coaxial Connections

LO	1
RF	2
IF	3

Outline Drawing



Outline Dimensions (inch/mm)

A	B	C	D	E	F	G	H	
1.00	.75	.58	.50	.29	.38	.140	--	
25.40	19.05	14.73	12.70	7.37	9.65	3.56	--	
J	K	L	M	N	P	wt		
.687	--	.32	.13	.10	.16	grams	25.0	
17.45	--	8.13	3.30	2.54	4.06			

Features

- wide frequency range, 3700 to 10000 MHz
- low conversion loss, 5.0 dB typ.
- high L-R isolation, 30 dB typ.

Applications

- SATCOM
- instrumentation
- defense & federal communications
- SHF



CASE STYLE: BU413

Connectors	Model	Price	Qty.
SMA	ZMX-10G+	\$81.95 ea.	(1-9)

+ RoHS compliant in accordance with EU Directive (2002/95/EC)

The +Suffix has been added in order to identify RoHS Compliance. See our web site for RoHS Compliance methodologies and qualifications.

Electrical Specifications

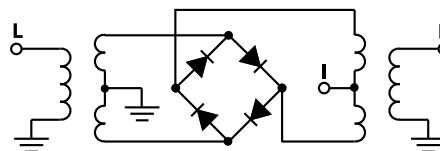
FREQUENCY (MHz)	CONVERSION LOSS (dB)	LO-RF ISOLATION (dB)		LO-IF ISOLATION (dB)	
		Typ.	Min.	Typ.	Min.
3700-10000	DC-2000	30	20*	17	8

1 dB COMP.: +1 dBm typ.
* 15 dB min. 8.5 to 10 GHz

Typical Performance Data

Frequency (MHz)	Conversion Loss (dB)	Isolation L-R (dB)	Isolation L-I (dB)	VSWR RF Port (:1)	VSWR LO Port (:1)
3700.00	3730.00	4.99	34.57	12.28	2.40
4000.00	4030.00	5.05	33.76	12.98	2.46
4337.97	4367.97	5.02	44.41	13.90	2.44
4656.96	4686.96	4.95	36.62	14.49	2.49
5000.00	4970.00	4.44	38.22	15.80	2.54
5374.68	5344.68	4.33	39.47	16.96	2.52
5773.42	5743.42	4.40	38.75	17.25	2.48
6000.00	5970.00	4.84	35.07	17.16	2.47
6411.39	6381.39	4.43	33.08	16.34	2.51
6810.13	6780.13	4.65	31.52	16.66	2.42
7000.00	6970.00	4.76	31.02	17.09	2.26
7448.10	7418.10	4.94	26.55	17.02	1.77
7846.84	7816.84	5.62	24.43	17.82	1.41
8000.00	7970.00	5.63	24.81	19.24	1.46
8325.32	8295.32	5.54	25.45	23.21	1.74
8724.05	8694.05	5.72	24.75	26.18	2.32
9000.00	8970.00	5.63	24.10	27.42	2.90
9282.28	9252.28	5.53	22.97	27.93	3.61
9681.01	9651.01	6.49	20.82	28.97	4.53
10000.00	9970.00	7.60	19.42	31.29	5.06

Electrical Schematic



Mini-Circuits®
ISO 9001 ISO 14001 AS 9100 CERTIFIED

For detailed performance specs & shopping online see web site

P.O. Box 350166, Brooklyn, New York 11235-0003 (718) 934-4500 Fax (718) 332-4661 The Design Engineers Search Engine www.minicircuits.com Provides ACTUAL Data Instantly at [minicircuits.com](http://www.minicircuits.com)

IF/RF MICROWAVE COMPONENTS

Notes: 1. Performance and quality attributes and conditions not expressly stated in this specification sheet are intended to be excluded and do not form a part of this specification sheet. 2. Electrical specifications and performance data contained herein are based on Mini-Circuit's applicable established test performance criteria and measurement instructions. 3. The parts covered by this specification sheet are subject to Mini-Circuit's standard limited warranty and terms and conditions (collectively, "Standard Terms"); Purchasers of this part are entitled to the rights and benefits contained therein. For a full statement of the Standard Terms and the exclusive rights and remedies thereunder, please visit Mini-Circuit's website at www.minicircuits.com/MCLStore/terms.jsp.

REV. B
M113397
ZMX-10G+
ED-3937/1
DJ/TD/CP/AM
081106
Page 1 of 2

